

Universal machine **Chameleon**

NO. 20000

ROKAMAT
easy working



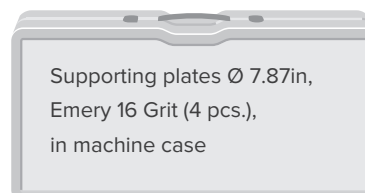
▣ **Grinding, stripping wallpaper, smoothing, cleaning, polishing – all with one machine**

- ▣ Light weight due to separation of tool and motor
- ▣ Smooth operation thanks to contra-rotating tool discs
- ▣ Large operating surface (2x Ø 7.87in)
- ▣ Continuous speed control to optimise each different application
- ▣ Dust-free working in combination with our special vacuum cleaners

Technical Data

Tool rpm	150–570
Power consumption	1 000 W
Weight	Tool approx. 5 lbs Motor approx. 5 lbs

Scope of supply



Supporting plates Ø 7.87in,
Emery 16 Grit (4 pcs.),
in machine case

Not all items available in the U.S.

Accessories Chameleon

Ø 7.87 in

Cleaning

	Unit	No.	Fig.
Steel brushes, fine	2	21200	—
Steel brushes, medium	2	21300	1
Steel brushes, coarse	2	21400	—
Special steel brushes, medium	2	23000	—
Special steel brushes, coarse*	2	23100	—
Nylon brushes, superfine	2	21505	—
Nylon brushes, fine	2	21500	—
Nylon brushes, coarse	2	21600	2
Steel / nylon brushes	2	22500	—

- Cleaning and waxing formwork units
- Removing old, loose plaster, render and paint
- Cleaning and preparing plaster for new coverings
- Cleaning exterior facades of moss and algae
- *Perfect for removing ivy from facades

Cleaning and polishing

All pads to use with the supporting plates No. 20700

	Unit	No.	Fig.
Cleaning pad, coarse	2	23500	—
Cleaning pad, medium	2	23400	3
Cleaning pad, fine	2	23900	—
Polishing pad, very fine	2	23300	—
Lambskin pad, superfine	2	23600	4

- Cleaning formwork, exposed concrete, buildings and facades, polishing "marble effect" or parquet

Scratching

	Unit	No.	Fig.
Scratching discs "longlife"	2	20100	5

- For scratching sgraffito. Large working surface ensures both safe and flat working with the nailplates (use with guide rails no. 22210 recommended).

Removing old render

	Unit	No.	Fig.
Widia discs	2	21700	6

- For removing sanding old plasters and for roughening dry plaster. Adhesive residues of carpet glue and tiling adhesives can be milled off, as well as heavy fouling on industrial floors (area performance for tiling adhesive: about 20–30 m² per hour).

Smoothing

	Unit	No.	Fig.
Smoothing attachments	2	25200	7
to use with base plate	2	25000	—

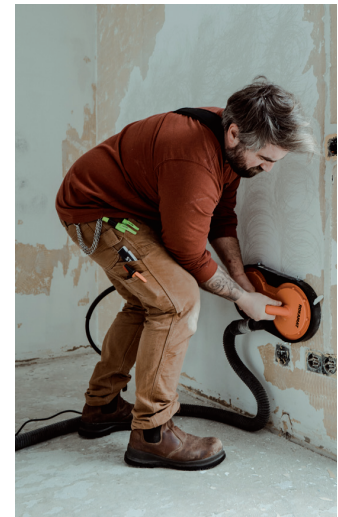
- Smoothing plates for abrading render and plaster after setting (use with guide rails no. 22210 recommended).



Cleaning formwork units



Working with the RVC-L Rucksack vacuum cleaner



Removing old paint

Not all items available in the U.S.

Accessories Chameleon

Ø 7.87 in

Flattening concrete

	Unit	No.	Fig.
Flattening plate	2	22700	1

· For flattening concrete easily and quickly. To be used before the material has taken final set (sprayed concrete).

Flattening plates with trowel blades	2	22600	2
--------------------------------------	---	-------	---

· For hard trowelling (e. g. wet concrete inside silos)

Stripping wallpaper

	Unit	No.	Fig.
Premium package "Removing wallpaper"	Set	22250	—
Perforating discs, Shaving plates, Guide rails, Sharpening board			

Perforating discs	2	22200	3
-------------------	---	-------	---

· Perforating wallpaper so that it can be easily soaked and stripped

Shaving plates	2	22300	4
----------------	---	-------	---

Sharpening board (for re-sharpening the blades of shaving plates)	1	22220	—
--	---	-------	---

· For removing wallpaper, for cleaning shuttering or for other shaving work

Guide rails	2	22210	5
-------------	---	-------	---

· Please use in combination with perforating and shaving discs

Grinding

	Unit	No.	Fig.
Supporting plates with velcro	2	20700	6

· For mounting sanding discs, grinding grids, metal abrasive discs, cleaning and polishing pads

Sanding discs

	Unit	No.	Fig.
Emery 16 Grit (for polystyrene)	4	20816	7
Emery 24 Grit	4	20824	—
Emery 40 Grit	6	20840	—
Emery 60 Grit (for gypsum)	6	20860	—
Emery 80 Grit	6	20880	—
Emery 100 Grit	6	20810	—
Emery 120 Grit	6	20812	—

· Sanding discs for professional painting and varnishing

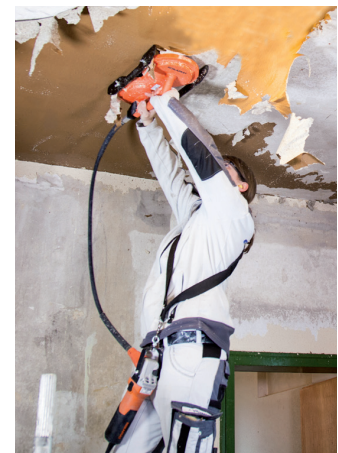
· Surface grinding: Polystyrene insulating boards or other thermal insulating systems (EIFS and ETICS), taped board joints, plaster background (1st layer of the render), roughening up polystyrene surfaces

· Removing adhesive residues (carpets)

· Cleaning shuttering pans



Grinding plaster



Removing wallpaper



Cleaning facades



made
in germany
since 1982

Not all items available in the U.S.

Accessories Chameleon

Ø 7.87 in

JOST Superpads

	Unit	No.	Fig.
40 Grit	6	28040	1
60 Grit	6	28060	1
80 Grit	6	28080	1
120 Grit	6	28012	1
180 Grit	6	28018	1
220 Grit	6	28022	1

· Unique full-surface perforations and patented Velcro-type system allows full-surface dust extraction (no clogging), higher sanding capacity and shorter sanding time.

Grinding grids

	Unit	No.	Fig.
Grinding 80 Grit	4	27080	2
Grinding 100 Grit	6	27010	2
Grinding 120 Grit	6	27012	2
Grinding 180 Grit	6	27018	2
Grinding 220 Grit	6	27022	2

· For sanding plaster and fillers (drywall).

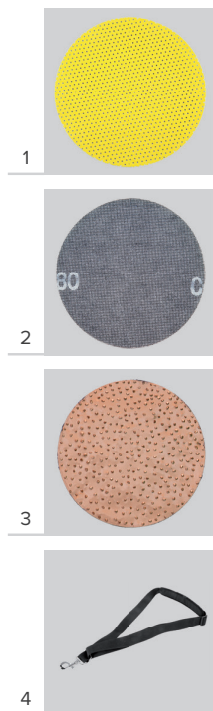
Aggressive grinding

	Unit	No.	Fig.
Metal abrasive discs, fine	2	22405	3
Metal abrasive discs, medium	2	23205	3
Metal abrasive discs, coarse	2	22905	3

· For grinding timber, brick, screed, carpet residue, fibreglass, gas concrete and many other materials

Optional accessory

	Unit	No.	Fig.
Shoulder strap	1	05100	4



Grinding EIFS and ETICS boards



Removing old plasters

ROKAMAT



made
in germany
since 1982

Master Wholesale Distributor:

WIND-LOCK™
DIVERSE. TRUSTED. PROVEN.

800-872-5625 | wind-lock.com